
PROPOSED DUKE LOW MOA IN THE PA WILDS

Nicole Faraguna, DCNR Policy Office



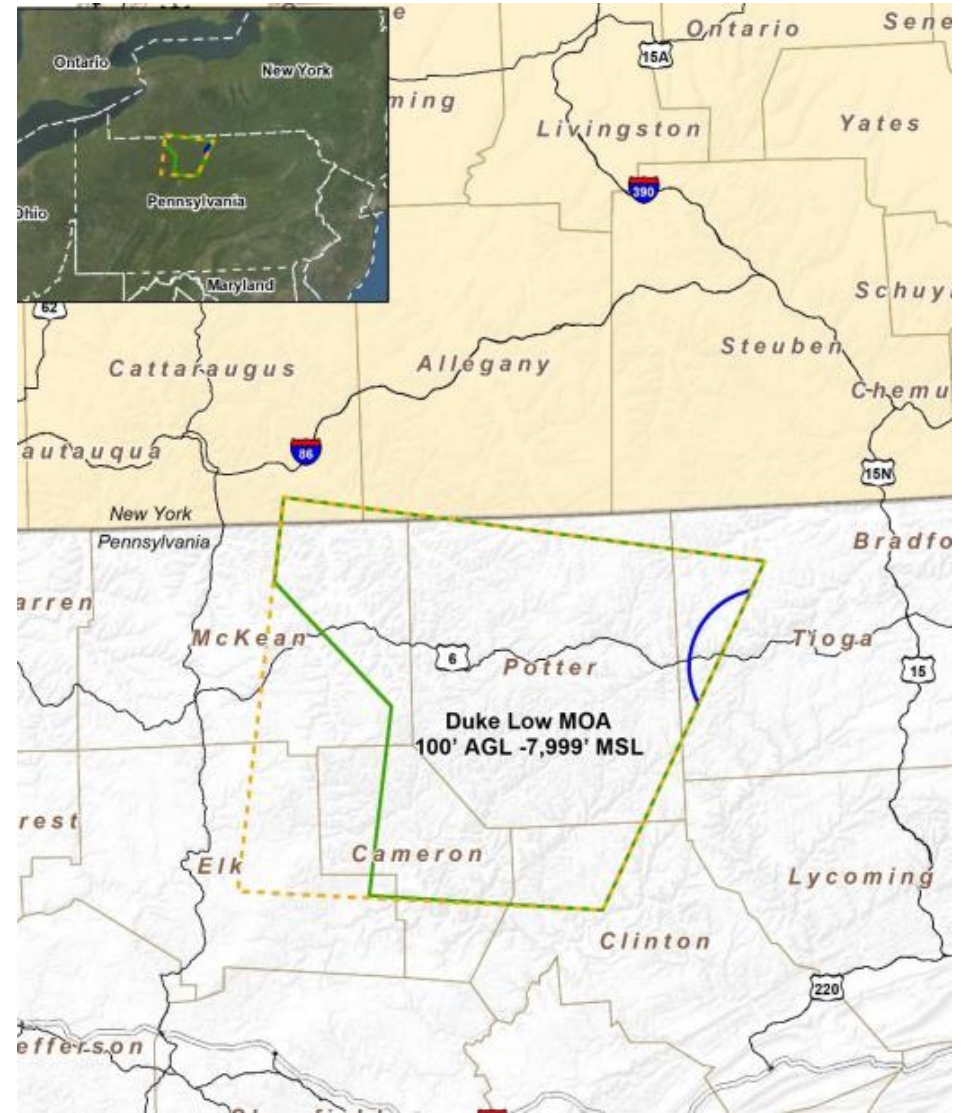
LOCATION

Positioned below Duke MOA and covering 1.4 million acres

- Cameron (northeastern portion)
- Clinton (northwestern corner)
- McKean (eastern portion)
- Potter (majority of county)
- Tioga (western portion)

A new Designated Airspace

- 100 ft AGL to 7,999 ft MSL
- Activated separately from Duke MOA

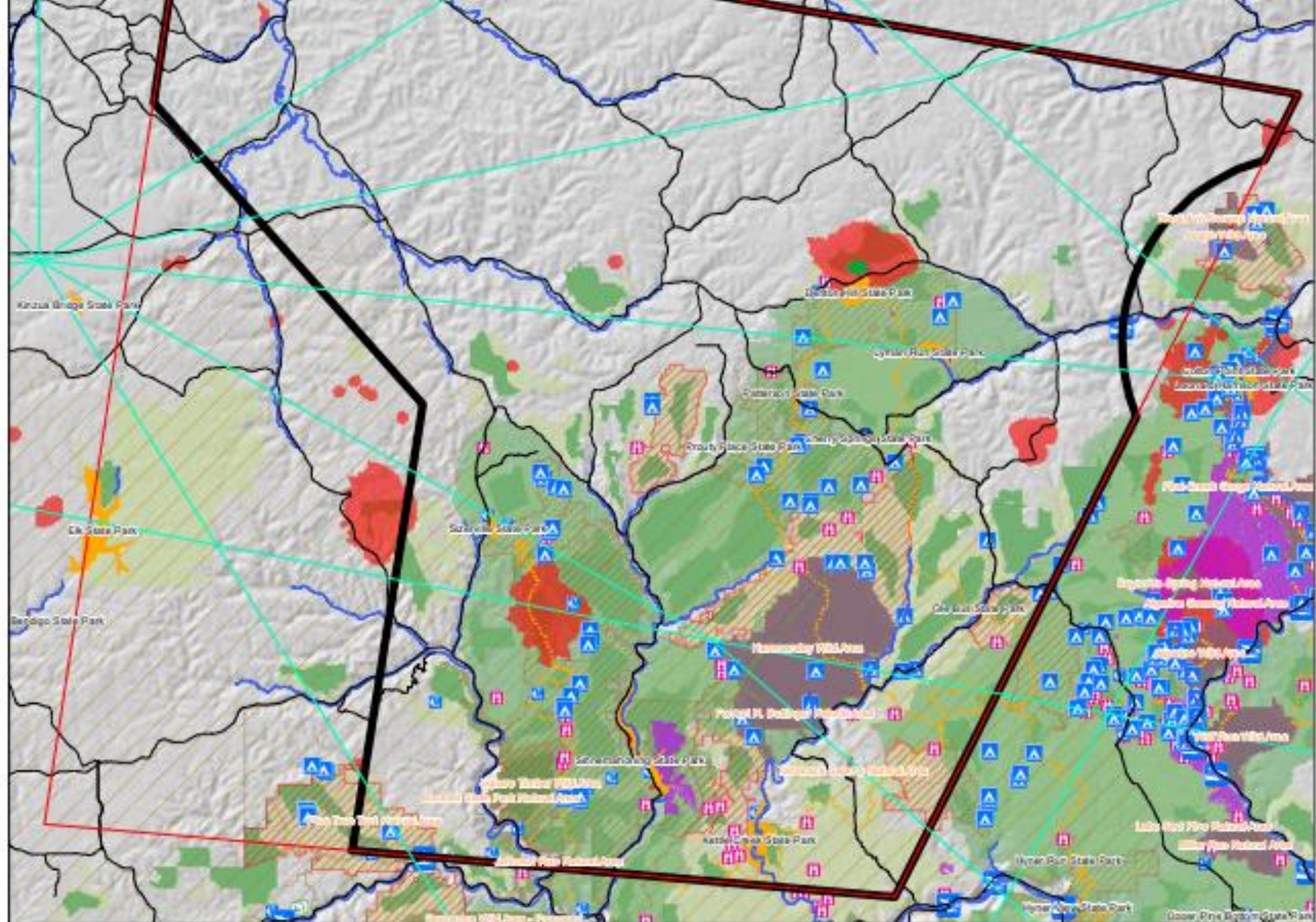


USAGE AND FREQUENCY

Proposed for low level training of MD A-10s, DC and NJ F-16s

- Two hours per day, twice per day, one hour at a time
 - Approximately 170 days/year or on average every other day
 - Weekend operations would be limited to Saturdays
 - Nighttime operations (sunset to 10:00 PM) not below 1000 ft AGL
-





Legend

- Flight Routes
- DUKE Existing MOA
- DUKE Proposed Low MOA
- Major Roads
- Major Streams
- State Parks
- State Forest Land

Composite

- ▲ Camping Sites
- ⚓ Boat Launch
- 🌌 Dark Sky Viewing Area
- 🚣 Fishing Pier
- 🌳 Forest Demonstration Site
- 🚀 Hang Glider Launch
- 🧗 Rock Climbing
- 📍 Trailhead
- 🏠 Vista
- 🌊 Waterfall
- 🦋 Wildlife Viewing Area
- Designated Hiking Only Trail
- Wild and Natural Areas
- High Conservation Value Forest
- Elk Management Zones
- Species of Concern
- Core Forest Management Units
- Land/Water Conserv. (LWCF)
- Wild Character Focus Areas

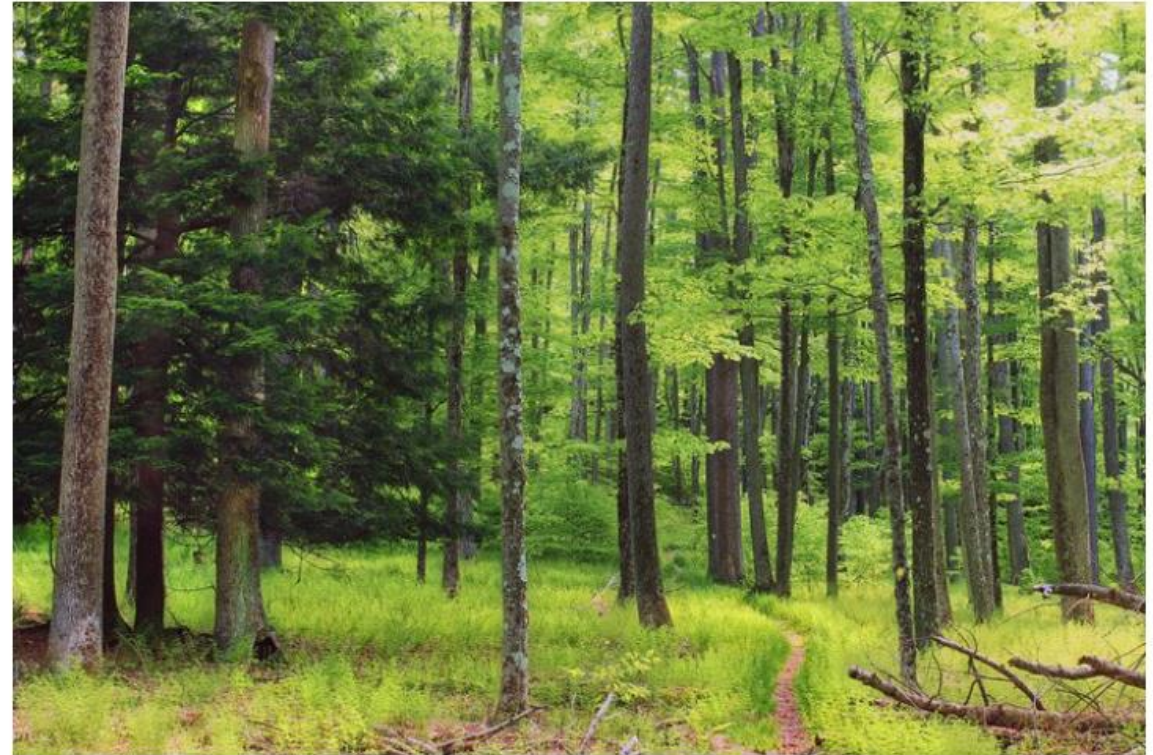


PROPOSED MITIGATION ACTIONS

- 1,000 ft AGL floor would be implemented over sensitive areas of concern
- 1,000 ft overflight buffer and a 0.5 nautical mile (NM) lateral buffer around Bald and Golden Eagle nests
- 500 ft AGL floor would be implemented over other sensitive areas of concern⁵
- 500 ft overflight buffer would be maintained over obstacles
- 6,000 ft MSL exclusion area would avoid Wellsboro Airport Class E airspace

No supersonic operations, release of chaff and flares, ordnance deployment, weapons firing, infrastructure changes or ground disturbance would be conducted

In fact, the most remote spot in Pennsylvania has earned distinction as the state's second largest wild area. Perhaps just as impressive: You won't find a larger roadless area in PA.



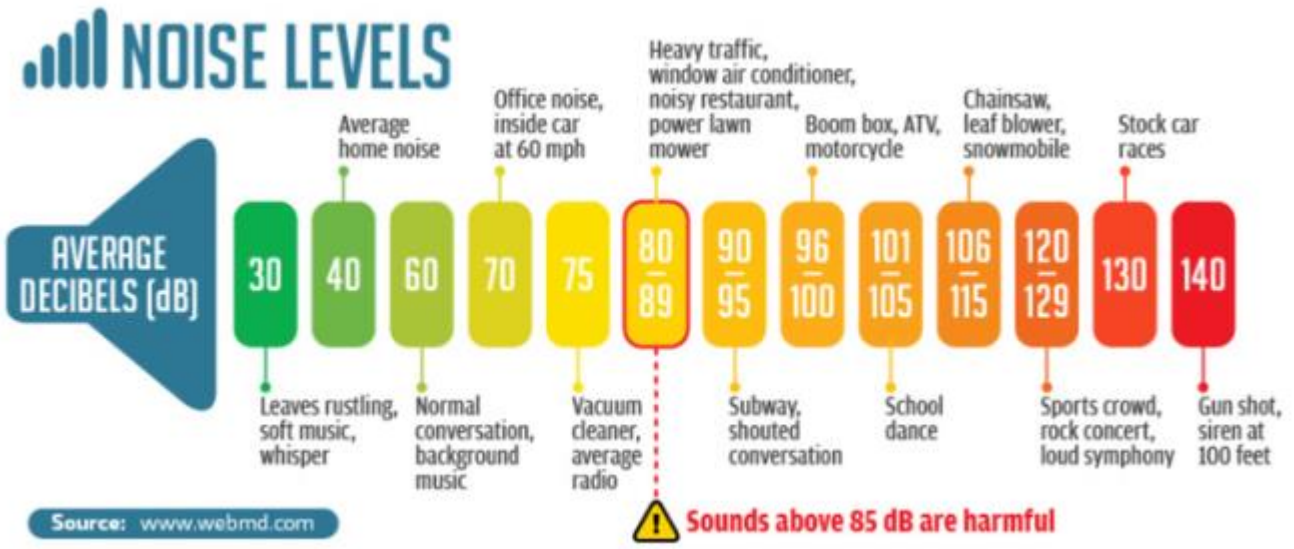
Flickr/Nicholas A. Tonelli

How Low is too Low?

How Loud is too Loud?

80 feet

100 feet



Public Comment Open

- Draft Final FONSI and Environmental Assessment Released
- Comment Period deadline: **May 17th**
- Download at:
https://www.175wg.ang.af.mil/DukeMOA_low
- **Or SEARCH Duke Low MOA**

